



**TUBE TRAKTOR**  
PAT PEND.



# BITE-ME COLLET PULLERS



The all new BP-1000 series of collet type pullers from Winema are designed with the latest technology to quickly and efficiently remove tubes and stubs from heat exchangers, condensers, chillers and other tubular pressure vessels.

Available in two styles, Double Acting & Automatic Gas Return, the BP pullers offer the best power to weight ratio available. With the ability to develop 9 tons of pulling force and a stroke of 150mm as standard they are also the most compact. The BP Collet Puller pulls tubes from 15.8 mm O.D. to 25.4mm O.D. from the tube sheet thickness up to 50.8mm.

## **Features**

- Compact and lightweight design
- Rapid cylinder stroke for unmatched productivity and seamless operation
- Floating collet design for extended tool life
- Adjustable nose piece
- Detachable single or double actuation control handle
- Ergonomically designed for ease of use
- Can be used with standard high pressure (10,000psi) hydraulic pumps

## **Specifications**

Stroke	Standard:	150mm
	Optional:	75mm and 225mm
Pulling Force	Standard:	9 metric tons
Length	Double Acting:	415mm O/A
	Gas Return:	465mm O/A
Weight	Double Acting:	7.95kg
	Gas Return:	8.40kg
Capacity	Tube	15.8mm to 25.4mm Tube OD
	Tube Sheet	up to 50.8 mm

## Tooling Options & Accessories

TUBE O.D.	TUBE GAGE	GRIPPER SET	MIN ENTER DIM AFTER EXP.	MAX ENTER DIM AFTER EXP.	DRAW MANDREL	NOSE PIECE
5/8	16-17	BP-1000-17-056-16	12,85 mm (0,506")	13,85 mm (0,545")	BP-1000-16-058	BP-1000-14-058
	18-19	BP-1000-17-056-18	13,60 mm (0,535")	14,60 mm (0,574")		
	20-21	BP-1000-17-056-20	14,30 mm (0,562")	15,30 mm (0,602")		
	22-23	BP-1000-17-056-22	14,60 mm (0,576")	15,65 mm (0,616")		
3/4	16-17	BP-1000-17-075-16	16,05 mm (0,631")	17,05 mm (0,671")	BP-1000-16-075	BP-1000-14-075
	18-19	BP-1000-17-075-18	16,90 mm (0,665")	17,90 mm (0,704")		
	20-21	BP-1000-17-075-20	17,60 mm (0,692")	18,60 mm (0,732")		
	22-23	BP-1000-17-075-22	17,95 mm (0,706")	18,95 mm (0,746")		
7/8	16-17	BP-1000-17-087-16	19,20 mm (0,755")	20,20 mm (0,795")	BP-1000-16-087	BP-1000-14-087
	18-19	BP-1000-17-087-18	20,00 mm (0,787")	21,00 mm (0,826")		
	20-21	BP-1000-17-087-20	20,70 mm (0,815")	21,70 mm (0,854")		
	22-23	BP-1000-17-087-22	21,05 mm (0,828")	22,05 mm (0,868")		
1	16-17	BP-1000-17-100-16	22,40 mm (0,881")	23,40 mm (0,921")	BP-1000-16-100	BP-1000-14-100
	18-19	BP-1000-17-100-18	23,20 mm (0,913")	24,20 mm (0,952")		
	20-21	BP-1000-17-100-20	23,90 mm (0,941")	24,90 mm (0,980")		
	22-23	BP-1000-17-100-22	24,70 mm (0,972")	25,70 mm (1,011")		



Bite-Me

High Speed Tube Traktor



When used in conjunction with our high speed Collet Pullers the Tube Traktor takes the effort out of condensor tube pulling.

The Tube Traktor represents the latest evolution in high speed tube extracting equipment. Designed for use in conjunction with the collet style tube pullers this compact powerful machine will enable the operator to extract and flatten tubes from condensers at speeds between 10 and 70 metres per minute once the expansion joint has been broken.



Made from the highest quality materials this reliable dependant machine incorporates, quality hydraulic motors, solid 1 piece pulling rolls machined from tool steel and hardened for extended life, body components machined from marine grade aluminium for high strength, fully sealed bearings for hour's of trouble free operation, and incorporates a built in lifting eye and handle.

The Tube Traktors versatility is enhanced by the fact that it can run from almost any low pressure high flow hydraulic pump. The Tractors ideal operating pressure is 137 bar (2000 psi) with flows between 20lpm to 100lpm depending on the desired pulling speed. It is preferred that the pump have a pressure compensating bi-directional proportional flow control fitted for safe, accurate and efficient use of the pump and the Tube Traktor.

The pump also has forward and reverse flow as occasionally the Tube Tractor will need to be reversed. This will require a 3 position (Forward / neutral / Reverse) joystick mounted to the Tube Traktor for ease of operation.

Originally designed to remove and flatten non ferrous tubes from 5/8" to 1 1/4" OD the Tube Traktor can be used to extract ferrous tubes from 5/8" to 1 1/2" OD using radius shaped rolls to sized to fit each tube.

### **Features**

- ❖ Solid 1 piece Pulling Rolls machined from tool steel and hardened for extended life.
- ❖ Body components machined from aircraft grade aluminium for high strength and anodised for corrosion resistance.
- ❖ Steel nose piece and bearing caps for corrosion resistance
- ❖ Fully sealed bearings for hour's of trouble free operation, no greasing required.
- ❖ Built in lifting eye and handle.
- ❖ Flattens tube for easy scrap handling
- ❖ Roll tension and spacing fully adjustable for different tube materials and sizes.
- ❖ Ferrous tube options available

### **Specifications**

Pulling Speed:	Up to 70mtrs per minute depending on pump.
Construction:	Aircraft grade aluminium, tool steel and powder coated steel.
Weight:	Approx 50kg
Size overall:	160mm deep 220mm wide 350 mm high (excludes exit tube)
Tube capacity:	15.8 mm to 38.1 mm" OD, up to 2.11mm wall thickness
Standard Configuration:	1" non ferrous tubes



## Inclusions

Tube Traktor is supplied with,  
Heavy duty transport locker  
Hand tools for normal operation  
User manual

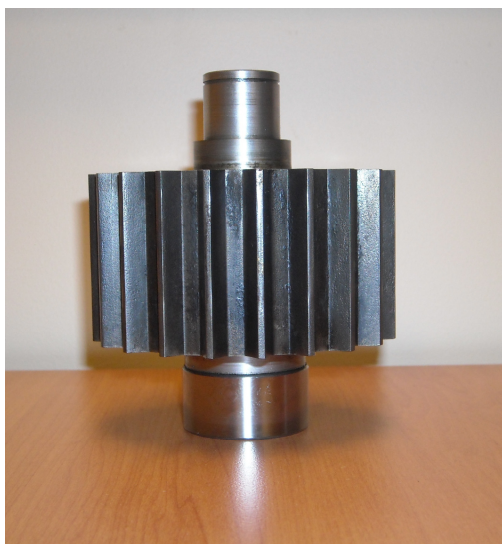
## Options

If you require a complete package,  
Hydraulic pump  
Hydraulic hoses and fittings  
Spring balance  
Shipping



## Tooling Options & Accessories

TUBE O.D.	TUBE GAGE	FRONT COLLAR	CRUSHING ROLLS	TUBE SIZE ROLLS	CENTRE DRIVE SHAFT
5/8	16-23	TT-010-0625	TT-006-01	TT-048-0625	TT-047
3/4	16-23	TT-010-0750	TT-006-01	TT-048-0750	TT-047
7/8	16-23	TT-010-0875	TT-006-01	TT-048-0875	TT-047
1	16-23	TT-010-1000	TT-006-01	TT-048-1000	TT-047
1 1/4	16-23	TT-010-1250	TT-006-01	TT-048-1250	TT-047
1 1/2	16-23	TT-010-1500	TT-006-01	TT-048-1500	TT-047



# **GENERAL SPECIFICATIONS**

<b><u>Description</u></b>	<b><u>Imperial</u></b>	<b><u>Metric</u></b>
---------------------------	------------------------	----------------------

## **Tube Traktor Head Unit TT-1000**

Weight	86 lbs	38 Kg
Size	15x 10x 11 inch	380x 260x 330mm
Coating	Anodised & painted	

## **Standard Electric Hydraulic Power Unit**

Weight	562 lbs	250 Kg
Size	36 x 36 x 54 inch	1000 x 1000 x 1500mm
Capacity	76 US Gal	200 Ltr
Maximum Operating Pressure	2250 PSI	155 Bar
Maximum Flow	16.6 GPM/US	65 LPM
Rated Output	20 HP	15Kw
Voltage	415 Volt	
Current	32 Amps	

## **Optional Pneumatic Hydraulic Power Unit**

Weight	310 lbs	140 Kg
Size	36 x 30 x 54 inch	1000 x 1000 x 1500mm
Capacity	38 US Gal	100 Ltr
Maximum Operating Pressure	2250 PSI	155 Bar
Maximum Flow	7.2 GPM/US	28 LPM
Rated Output	9.5 HP	7.1Kw
Required Air Pressure	100 PSI	7 Bar
Required Air Volume	275 CFM	475M <sup>3</sup> /H

## **Hydraulic power unit is equipped with**

Forward & reverse flow control  
8-mtr main hoses c/w QD fittings  
4 mtr whip hoses c/w QD fittings  
6-mtr mains cable  
On/Off, 24 volt electric or pneumatic remote pendant  
Phase rotation switch (electric only)  
Pump is shipped without hydraulic oil



# **WINEMA AGENCIES**

2/5 Percy Drive, Brendale QLD 4500 Australia  
Ph: +61 7 3889 7622  
ABN 88 094 338 431

Fx: +61 7 3889 7621  
[www.winema.com.au](http://www.winema.com.au)