

Pneumatic, Hydrostatic and Hydraulic Pump Systems



Benefits

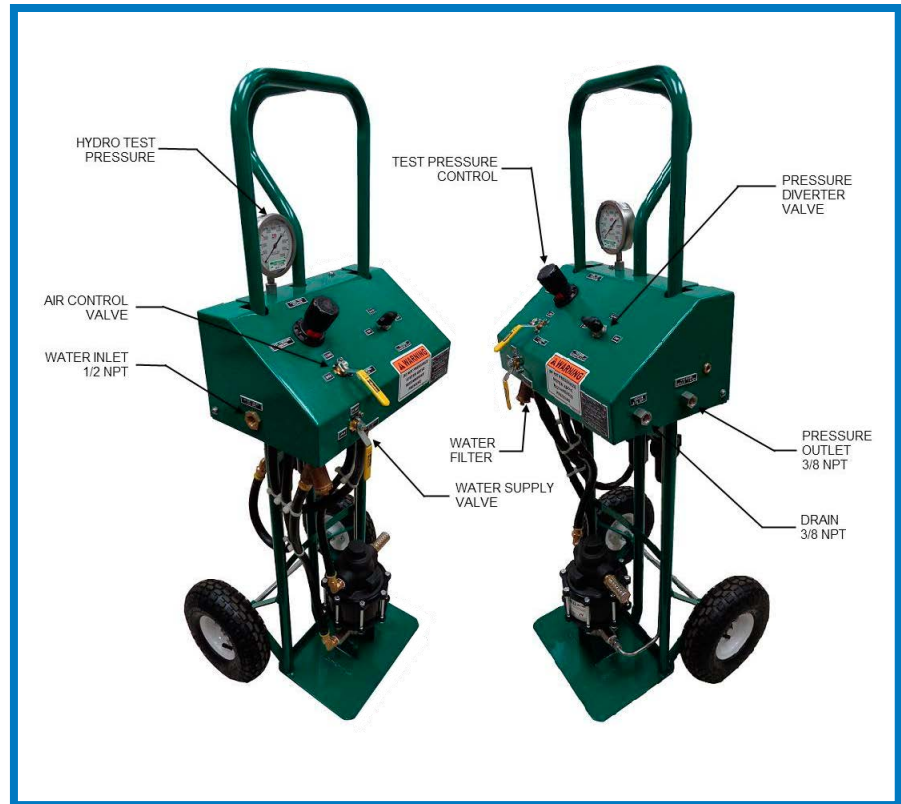
The Model 1900 series pump systems are our portable two wheel, four wheel, and hand carry systems. Each system is designed to operate at the required pressure and can have multiple outlets, pumps and gauges. This type of system can be configured to meet specific customer requirements.

Standard Features

MODEL 1900 SERIES

The standard Model No. 1900 portable pressure testing systems comes in three different series options including a sturdy, industrial service wheeled handcart, enclosed console with locking casters, and a tabletop industrial frame. The system will consist of the following components:

- Air operated pump with 3,000, 6,000, 10,000, 15,000 and 30,000 psi hydrostatic test circuits.
- CTI-1 or CTI-2 air operated pumps for Hydrostatic or Hydraulic applications.
- One (1) 4" top mounted gauge for requested pressure (0.5% accuracy).
- Carbon steel powder coated.
- Outlet port for hydrostatic or hydraulic systems
- Outlet pressure block and bleed valves.
- Air filter and lubricator assembly for inlet supply air to pumps.
- Hydraulic reservoir for oil supply. (for hydraulic service only).

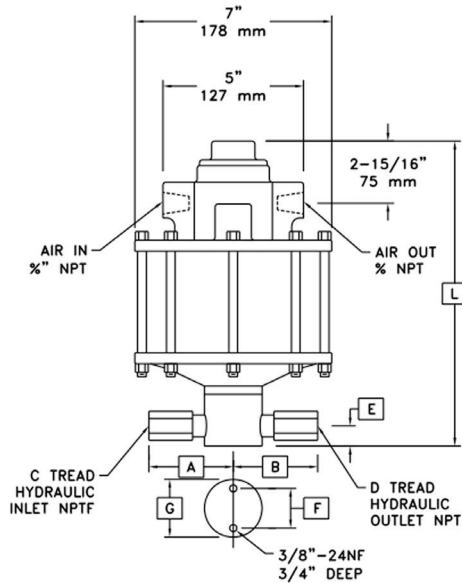


SPECIFICATIONS

CTI-1 Series pumps

The CTI-1 series pumps range is from 1,000 psi to 42,500 psi. The air drive is 5" in diameter. The CTI-1 series comes in fourteen models.

CTI - 1 MODEL PUMP DIMENSION DRAWING



CTI-1-10 THRU CTI-1-19

DIMENSIONS ins./mm

L	A	B	C	D	E	F	G
12 5/16	3	4	1	1/2	1	1 3/4	2 1/2
313	76	102	1	1/2	25	44	64

CTI-1-26 THRU CTI-1-107

DIMENSIONS ins./mm

L	A	B	C	D	E	F	G
10 7/8	3	3 3/8	1/2	1/2	7/8	1 3/4	2 1/2
276	76	86	1/2	1/2	22	44	64

CTI-1-140 THRU CTI-1-425

DIMENSIONS ins./mm

L	A	B	C	D	E	F	G
11 1/4	2 1/2	2 5/16	3/8	3/8	7/8	3/4	2 1/2
286	64	59	3/8	3/8	22	44	64

CTI-1 Typical Hydraulic Pressure - Static Condition

Air Drive PSI	20	40	60	80	100
CTI-1-10	180	385	590	795	1000
CTI-1-12	200	450	700	980	1225
CTI-1-19	330	700	1100	1500	1900
CTI-1-26	475	1000	1550	2000	2625
CTI-1-30	525	1150	1775	2350	3075
CTI-1-36	600	1400	2125	2825	3625
CTI-1-58	1000	2200	3400	4600	5800
CTI-1-70	1175	2600	4100	5600	7000
CTI-1-86	1700	3400	5100	6900	8600
CTI-1-107	2000	4200	5400	8500	10700
CTI-1-140	2400	5400	8300	11200	14000
CTI-1-187	3250	7250	11250	15000	18750
CTI-1-275	4000	10500	16250	21500	27500
CTI-1-425	8000	16500	25500	34000	42500

CTI-1 Hydraulic Pumps

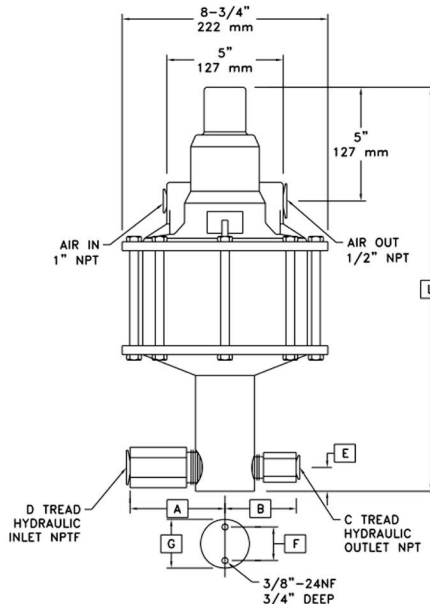
Model Number	Piston Diameter	Volume/Stroke Cubic Inches	Output Cu.In./min.	Output GPM
CTI-1-10	1.625	2.58	194	0.84
CTI-1-12	1.5	2.21	166	0.72
CTI-1-19	1.187	1.385	104	0.45
CTI-1-26	1	0.982	74	0.32
CTI-1-30	0.937	0.862	65	0.28
CTI-1-36	0.875	0.766	57	0.25
CTI-1-58	0.687	0.464	35	0.15
CTI-1-70	0.625	0.384	29	0.12
CTI-1-86	0.562	0.31	23	0.1
CTI-1-107	0.5	0.245	18	0.08
CTI-1-140	0.437	0.188	14	0.06
CTI-1-187	0.375	0.138	10	0.04
CTI-1-275	0.312	0.096	7	0.03
CTI-1-425	0.25	0.061	5	0.02

SPECIFICATIONS

CTI-1 Series pumps

The CTI-2 series pumps range is from 2,150 psi to 45,800 psi. The air drive is 6" in diameter. The CTI-2 series comes in ten models.

CT-2 MODEL PUMP DIMENSION DRAWING



CTI-2-21 THRU CTI-2-36

DIMENSIONS ins./mm

L	A	B	C	D	E	F	G
17 1/16	3	4	1	1/2	1	1 3/4	2 1/2
433	76	102	1	1/2	25	44	64

CTI-2-60 THRU CTI-2-180

DIMENSIONS ins./mm

L	A	B	C	D	E	F	G
15 3/4	3	3 3/8	1/2	1/2	7/8	1 3/4	2 1/2
400	76	86	1/2	1/2	22	44	64

CTI-2-237 THRU CTI-2-458

DIMENSIONS ins./mm

L	A	B	C	D	E	F	G
16 1/8	2 5/16	2 1/2	3/8	3/8	7/8	1 3/4	2 1/2
410	59	64	3/8	3/8	22	44	64

CTI-2 Hydraulic Pumps

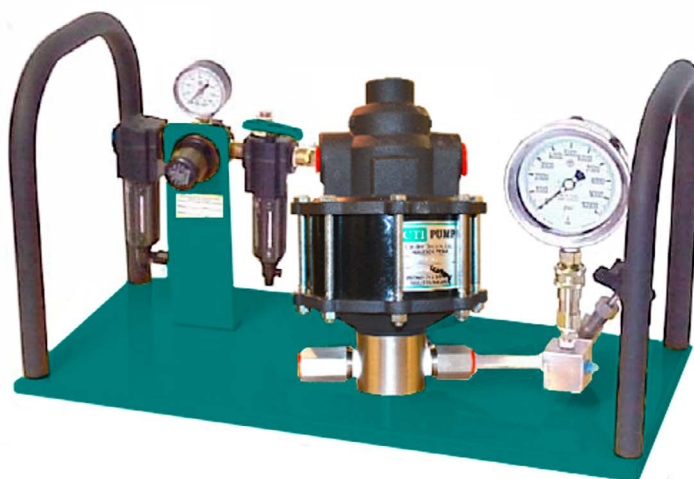
Model Number	Piston Diameter	Volume/Stroke Cubic Inches	Output Cu.In./min.	Output GPM
CTI-2-21	1.437	4.06	305	0.84
CTI-2-27	1.315	3.382	254	0.72
CTI-2-36	1.125	2.49	187	0.45
CTI-2-60	0.875	1.5	113	0.32
CTI-2-97	0.687	0.928	70	0.28
CTI-2-144	0.562	0.621	47	0.25
CTI-2-180	0.5	0.491	37	0.15
CTI-2-237	0.437	0.376	28	0.12
CTI-2-323	0.357	0.276	21	0.1
CTI-2-458	0.312	0.192	14	0.08

CTI-2 Typical Hydraulic Pressure - Static Condition

Air Drive PSI	20	40	60	80	100
CTI-2-21	425	875	1300	1750	2150
CTI-2-27	450	1000	1550	2125	2700
CTI-2-36	625	1400	2150	2850	3600
CTI-2-60	1050	2275	3500	4650	6000
CTI-2-97	1750	3700	5900	7700	9700
CTI-2-144	2600	5550	8500	11500	14400
CTI-2-180	3200	7100	10800	14500	18000
CTI-2-237	4400	9100	14000	18800	23700
CTI-2-323	6000	12600	19100	25600	32300
CTI-2-458	8800	18000	27000	36500	45800

MODEL 1900 SERIES PUMP

- Single or dual low/high pump systems
- High pressure gas booster system.
- Air test circuit with gauge.
- Extra outlet port for use with chart recorder.
- Recirculation system.
- Circle chart recorder.
- Data Acquisition System



CLIMAX Training Facilities

CLIMAX has been teaching the fundamentals and fine points of portable machine tool operation for practically as long as we've been inventing and building the tools.

We offer several training facilities across the United States - the Global Learning Center, situated in our corporate headquarters near Portland, Oregon, our New Hampshire Training Facility, and our Houston Training Facility. All facilities offer training for machine tool operators on safety and machine setup and operation. Trainees also receive technical tips and tools to improve operational efficiencies, with the vast majority of every program devoted to hands-on activities and skill development.



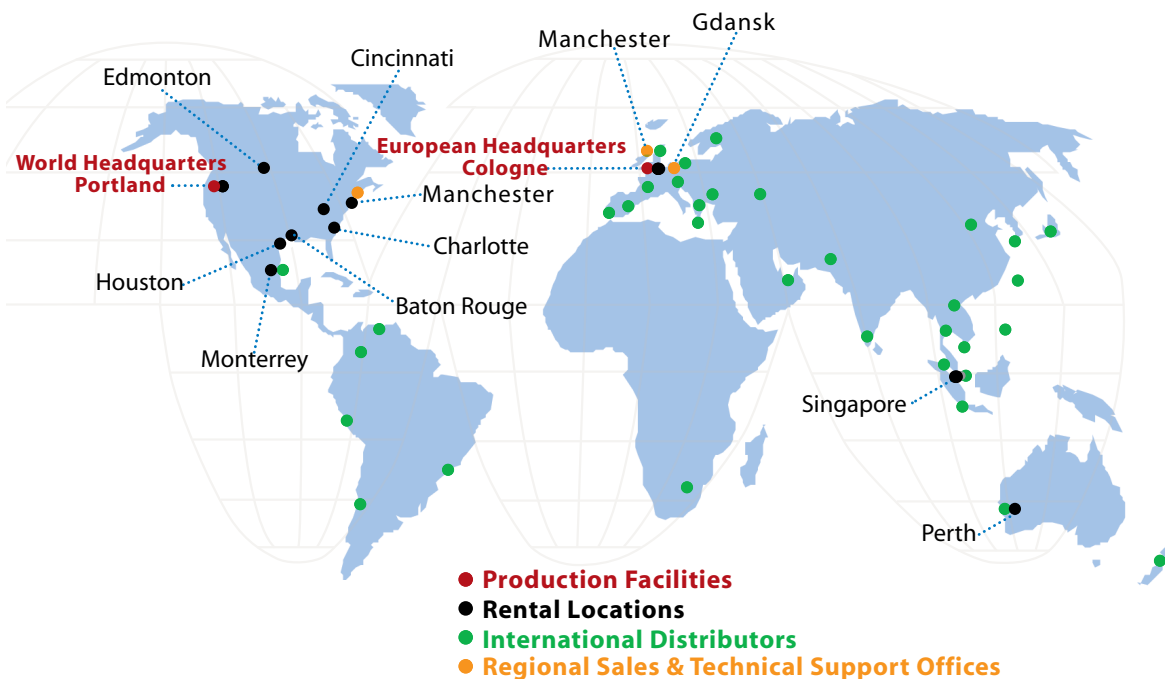
The CLIMAX instructional team includes specialists in shipbuilding, power generation, civil engineering, bridge re-building, petrochemical and other industries.

Whether it's a regularly scheduled course at one of our training facilities, or custom curriculum conducted at your facility, your machinists will benefit from courses developed by some of the most respected authorities in the business.

Call us today to register for a regularly scheduled class, or talk to us about how we can customize a training program for your specialized application.



CLIMAX GLOBAL LOCATIONS



Call CLIMAX for:

On-site Training

Need some refresher courses in setting up and operating your CLIMAX machine or tester?

Special Projects

CLIMAX has been customizing valve testing solutions for more than 25 Years.

Rentals

With 16 worldwide rental depot locations, you are never far away from a CLIMAX

World Headquarters

2712 E. Second Street
Newberg, Oregon 97132 USA
Worldwide Telephone: 1.503.538.2185
N. America Toll-Free: 1.800.333.8311
Fax: 1.503.538.7600
Email: info@cpmt.com

European Headquarters

Am Langen Graben 8
52353 Düren, Germany
Telephone: (+49) (0) 2421.9177.0
Fax: (+49) (0) 2421.9177.29
Email: info@cpmt.de