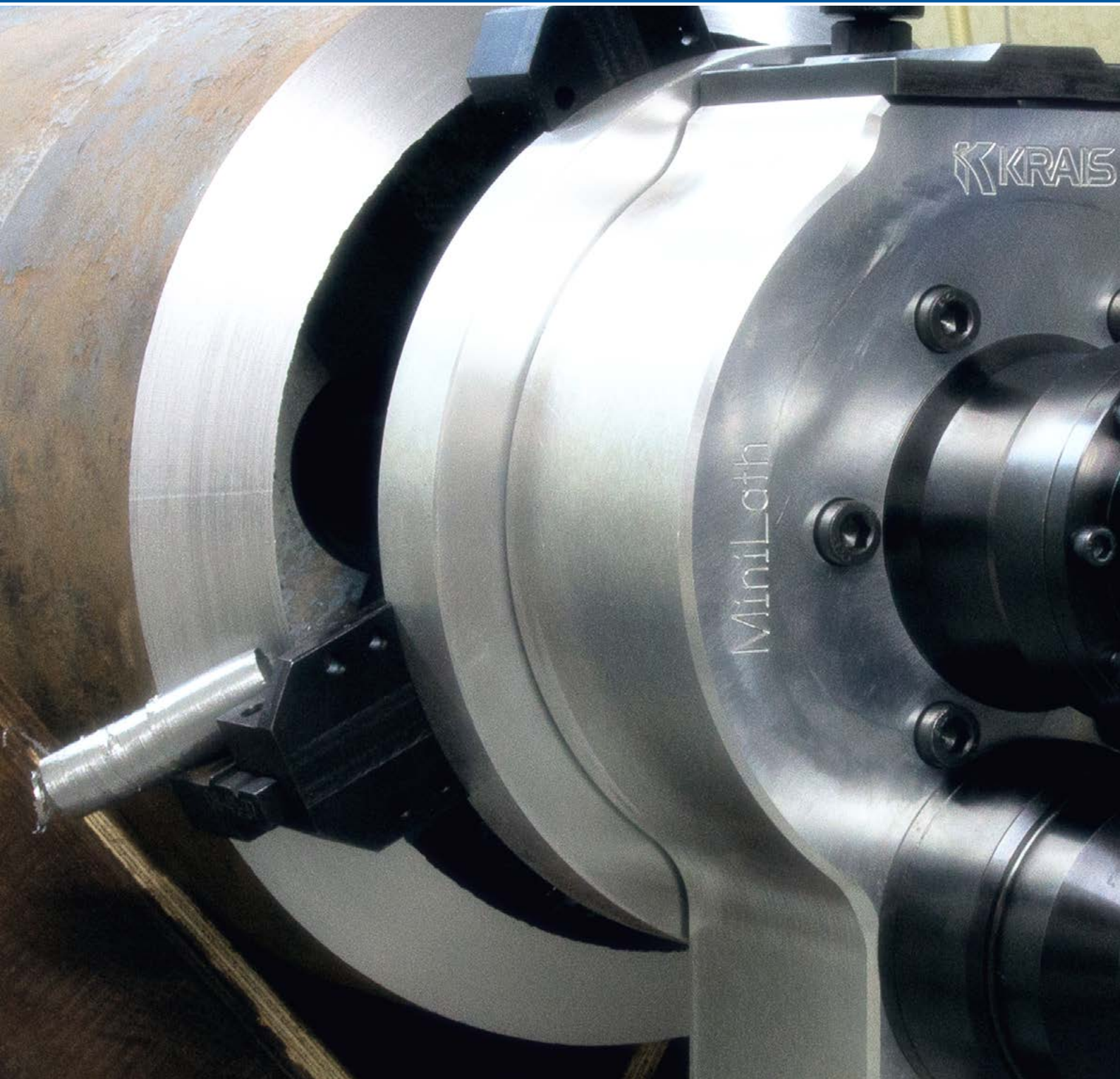


CHAPTER THREE

Pipe Beveling Series



SmartMill



			POWER	STANDARD CAPACITY*		STD. LOCKING RANGE*		FEED STROKE	TORQUE		
SmartMill			2,2 kW	50 – 254,0 mm OPTIONAL TO 304,8 MM		50 – 315,0 mm		50 mm	Choice of three		
			3,0 HP	2,0 – 10,0 ” OPTIONAL TO 12,0” MM		2,0 – 11,6 ”		2 ”			
Recommended for			Pipe facing ■ Pipe bevelling								
Air consumption:	70 cfm	2,2 m³/min	Air pressure:	90 PSI	6,2 Bar	Weight:	27 kg	59,4 Lbs	Dim:	640*240*205 mm	25*13*12“

* other capacity and locking ranger are available; please consult factory.

MACHINE FEATURES

- Most powerful machine within this size range on the market today. Utilises a powerful 2.2kW (3 HP) pneumatic motor that is entirely engineered and manufactured by KRAIS. It's a unique design that has been specifically designed for the largest end prep systems.
- SmartMill comes with one of 3 gearboxes as a standard. It gives a wide choice for operator: gearboxes allow to generate from 1522-3000 Nm (1141-2250 Ft.Lbs) torque on the cutter blade and controls speed from 0 to 22 rpm. No need for extra gearbox that reduces the RPM and multiplies the torque - it comes as standard!
- Innovative 6 point locking system assures maximum stability during all machining operations.
- Self-centering 50 mm (1,96") one piece locking shaft with build in jaws.
- Only one mandrel and 7 Jaw sets needed to cover machines entire range.
- Wide clamps produce superior clamping force for chatter free end preps.
- Fully portable for on-site and Fab-shop work.
- Available for sale or rent.

3 GEARBOXES

Choose your Gearbox!

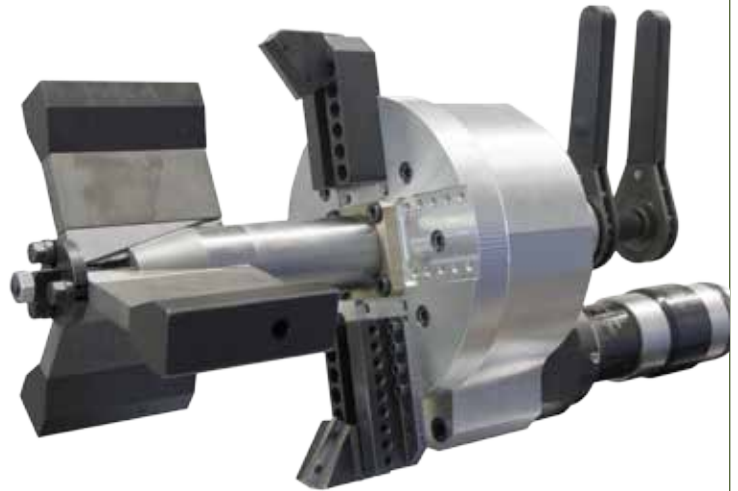
Torque/speed (depends on gear configuration)

3000 Nm / 11 RPM	2250 Ft.Lbs / 11 RPM
2256 Nm / 15 RPM	1690 Ft.Lbs / 15 RPM
1522 Nm / 22 RPM	1141 Ft.Lbs / 22 RPM



**Powerful
motor
unit**

- Powerful and efficient drives dedicated for our Lathe series beveling machines. 11-21 rpm and 1522-3000 Nm (1141-2250 Ft.Lbs, depend the gear box) torque on the cutter blade is a standard feature.



UNIQUE SHAFT DESIGN



- 50 mm (1,96") shaft, assures rigidity when machining heavy wall pipe.

HEAVY DUTY PENDANT



- Machine is equipped with a heavy duty pendant. This can be attached to both sides of the motor for operator convenience.

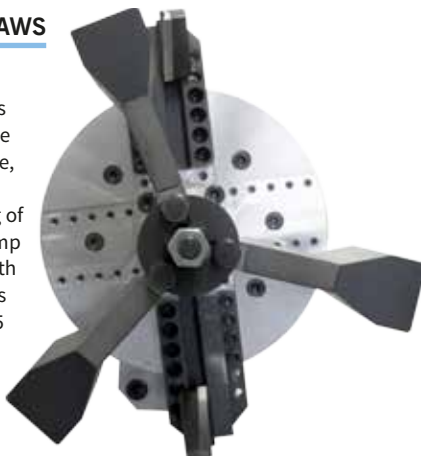
EXPANDABLE TOOL HOLDERS



- Machine is equipped with 8" standard cutter head. Optional 12" available on request.

6 POINTS LOCKING JAWS

- The innovative, 6 points jaws, effectively lock the machine within the pipe, allowing safe, efficient and smooth processing of the tube end. Wide clamp range 15 mm (0,59") with only 7 set of jaws covers the entire range: 50-315 mm (2-11,6")



ELECTRIC MOTOR UNIT



- The MiniLathe can also be supplied as an electric version, with a ~~1750 Watt~~ heavy duty right angle motor drive.

MINILATHE PERFORMANCE

⚠ The performance of the machine may vary depending on the skill of the operator, the materials, the conditions of the tools and the air supply system in case of pneumatic unit.

HOLDERS FOR MINILATHE

Facing
(with 2CDI insert)



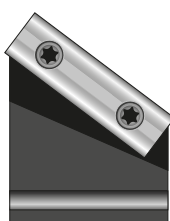
F-45-90

**Inside bevelling
and boring**
(with 2CDI insert)



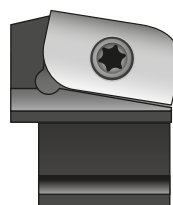
IB-45-37, IB-45-10

Outside bevelling
(with 2CDI insert)



OB-45-45, OB-45-37
OB-45-30, OB-45-10

“J” bevelling
(with 2CDJ-Rxx insert)



JP-45-45, JP-45-37
JP-45-30

**For other tool bits please
send your request .**

MiniLathe



	POWER	STANDARD CAPACITY*	STD. LOCKING RANGE*	FEED STROKE	TORQUE						
MiniLathe	2,2 kW	72 – 356,0 mm	72 – 348,0 mm	50 mm	Choice of three						
	3,0 HP	2,8 – 14,0 ”	2,8 – 13,7 ”	2 ”							
Recommended for	Pipe facing ■ Pipe bevelling										
Air consumption:	70 cfm	2,2 m³/min	Air pressure:	90 PSI	6,2 Bar	Weight:	35 kg	75 Lbs	Dim:	640*330*300 mm	25*13*12"

* other capacity and locking ranger are available; please consult factory.

MACHINE FEATURES

- Most powerful machine within this size range on the market today. Utilises a powerful 2.2kW (3 HP) pneumatic motor that is entirely engineered and manufactured by KRAIS. It's a unique design that has been specifically designed for the largest end prep systems.
- MiniLathe comes with one of 3 gearboxes as a standard. It gives a wide choice for operator: gearboxes allow to generate from 1770 to 3490 Nm (1327-2620 Ft.Lbs) torque on the cutter blade and controls speed from 0 to 21 rpm. No need for extra gearbox that reduces the RPM and multiplies the torque - it comes as standard!
- Innovative 6 point locking system assures maximum stability during all machining operations.
- Self-centering 2,75" one piece locking shaft with build in jaws, eliminates the issue of broken or loosening retaining springs and o-rings.
- Only one mandrel and 10 Jaw sets needed to cover machines entire range.
- Wide clamps produce superior clamping force for chatter free end preps.
- Fully portable for on-site and Fab-shop work.
- Available for sale or rent.

3 GEARBOXES

Choose your Gearbox!

Torque/speed (depends on gear configuration)

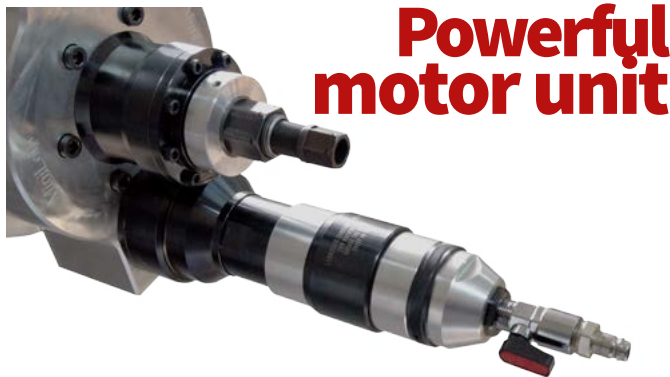
3490 Nm / 11 RPM	2620 Ft.Lbs / 11 RPM
2615 Nm / 15 RPM	1960 Ft.Lbs / 15 RPM
1770 Nm / 21 RPM	1327 Ft.Lbs / 21 RPM

6 POINTS LOCKING JAWS

The innovative, 6 points jaws, effectively lock the machine within the pipe, allowing safe, efficient and smooth processing of the tube end.

DOUBLE-SIDED YOKE

In order to facilitate the assembly of the machine in the pipe, the machine is equipped with a double-sided yoke with removable extensions so that two people can freely install into the processed pipe.

**Powerful motor unit**

Powerful and efficient drives dedicated for our Lathe series beveling machines. 11-21 rpm and 1770-3490 Nm (1327-2620 Ft.Lbs, depend the gear box) torque on the cutter blade is a standard feature.

**UNIQUE SHAFT DESIGN**

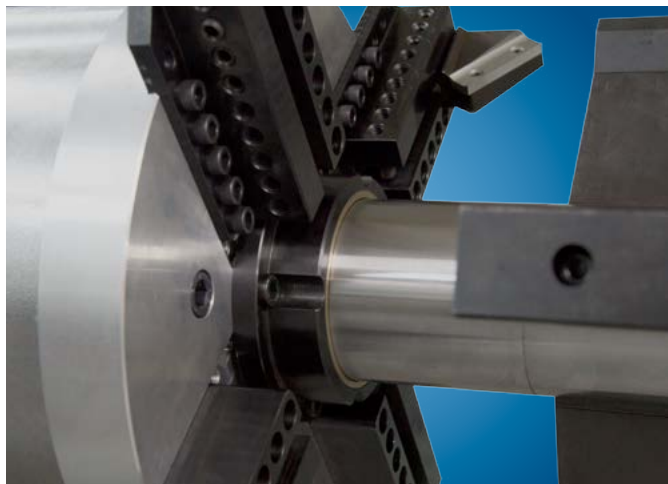
70 mm (2,75") shaft, assures rigidity when machining heavy wall pipe. The jaws are fully contained within the shaft with no need for retaining springs or O-rings that easily brake or get lost.

HEAVY DUTY PENDANT

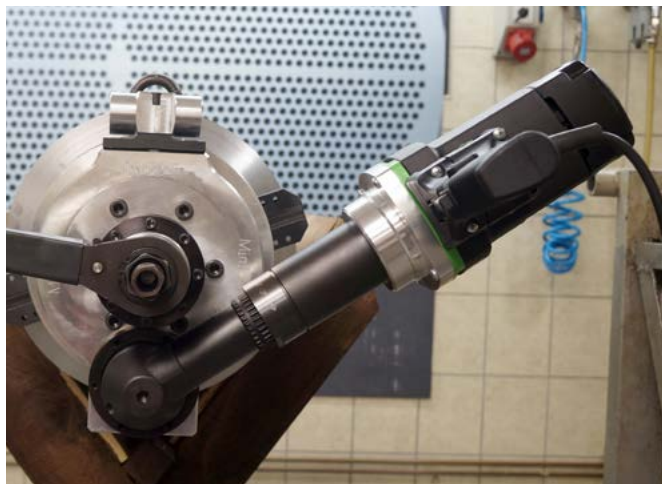
Machine is equipped with a heavy duty pendant. This can be attached to both sides of the motor for operator convenience.

EXPANDABLE TOOL HOLDERS

Extra extended tool holders increases the working range of the machine.

OPTIONAL SLIDE BEARING

As an option we can supply a bronze slide bearing that delivers more stability and rigidity while machining a very hard materials and heavy wall pipes.

ELECTRIC MOTOR UNIT

The MiniLathe can also be supplied as an electric version, with a 1750 Watt heavy duty right angle motor drive.

MINILATHE PERFORMANCE

The performance of the machine may vary depending on the skill of the operator, the materials, the conditions of the tools and the air supply system in case of pneumatic unit.

HOLDERS FOR MINILATHE

Facing
(with 2CDI insert)



F-45-90

Inside bevelling and boring
(with 2CDI insert)



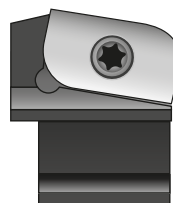
IB-45-37, IB-45-10

Outside bevelling
(with 2CDI insert)



OB-45-45, OB-45-37
OB-45-30, OB-45-10

“J” bevelling
(with 2CDJ-Rxx insert)



JP-45-45, JP-45-37
JP-45-30

HyperLathe



	POWER	STANDARD CAPACITY*	STD. LOCKING RANGE*	FEED STROKE	TORQUE
HyperLathe	2,61 kW	101 – 457 mm	101 – 449 mm	60 mm	7500 Nm
	3,5 HP	4" – 18,0 "	4" – 17,6 "	2,4 "	5530 Ft.Lbs
Recommended for	Pipe facing ■ Pipe bevelling				

Air consumption:	85 cfm	2,8 m³/min	Air pressure:	90 PSI	6,2 Bar	Weight:	84 kg	185 Lbs	Dim:	800*425*400 mm	31" x 17" x 16"
-------------------------	--------	------------	----------------------	--------	---------	----------------	-------	---------	-------------	----------------	-----------------

* other capacity and locking ranger are available; please consult factory.

MACHINE FEATURES

- Powerful 3.5 HP pneumatic drive generating 7500 Nm (5,530 ft.lbs) torque on the cutter blade. Variable speed control 0-10 rpm.
- No need for extra gear box that reduces the rpm and multiplies the torque. It comes as standard!
- 4" One piece locking shaft with build in jaws, eliminates the issue of broken or loosening retaining springs and o-rings
- One mandrel covers complete working range.
- Innovative 6 point locking system assures maximum stability during all machining operations.
- Only one mandrel and 10 Jaw sets needed to cover machines entire range.
- Self-centering shaft with build in jaws.
- Wide Clamps produce superior clamping force for chatter free end preps.
- Fully portable for on-site and Fab-shop work.
- Available for sale or rent.

TORQUE ON CUTTER BLADE



Machining pipe 18" schedule 160

6 POINT LOCKING JAWS

The Innovative, 6 points jaws, effectively lock the machine within the pipe, allowing safe, efficient and smooth processing of the tube end.

UNIQUE SHAFT DESIGN

100 mm (4") shaft, assures rigidity when machining heavy wall pipe. The jaws are fully contained within the shaft with no need for retaining springs or O-rings that easily brake or get lost.



**Powerful
motor
unit**

Powerful and efficient drives dedicated for our Lathe series beveling machines. 11-21 rpm and 1770-3490 Nm (1327-2620 Ft.Lbs, depend the gear box) torque on the cutter blade is a standard feature.

EXTENDABLE TOOL HOLDERS

Extended tool holders can increase the range of the machine due its extremely powerful pneumatic drive.

HEAVY DUTY PENDANT

Machine is equipped with a heavy duty pendant. This can be attached to both sides of the motor for operator convenience.

ELECTRIC MOTOR UNIT

The HyperLathe can also be supplied as an electric version, with a 3200 Watt heavy duty motor.



HYPERLATHE PERFORMANCE



The performance of the machine may vary depending on the skill of the operator, the materials, the conditions of the tools and the air supply system in case of pneumatic unit.

HYPERLATHE PERFORMANCE



ID Clamping End Prep Tool 4" I.D. to 18" O.D. 101,4 mm I.D. to 457.2 mm O.D

HOLDERS FOR HYPERLATHE

Facing
(with 2CDI insert)



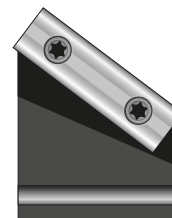
F-45-90

Inside bevelling and boring
(with 2CDI insert)



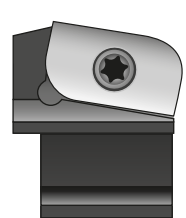
IB-45-37, IB-45-10

Outside bevelling
(with 2CDI insert)



OB-45-45, OB-45-37
OB-45-30, OB-45-10

"J" bevelling
(with 2CDJ-Rxx insert)



JP-45-45, JP-45-37
JP-45-30



PipeLathe



	POWER	STANDARD CAPACITY*	STD. LOCKING RANGE*	FEED STROKE	TORQUE
PipeLathe	2,61 kW	180 – 609 mm	180 – 600 mm	60 mm	12500 Nm
	3,5 HP	7" – 24,0 "	7 " – 23,6 "	2,4 "	9259 Ft.Lbs
Recommended for		Pipe facing ■ Pipe bevelling			

Air consumption:	95 cfm	2,8 m³/min	Air pressure:	90 PSI	6,2 Bar	Weight:	225 kg	495 Lbs	Dim:	950*550*500 mm	37,4" x 21,6" x 21,6"
-------------------------	--------	------------	----------------------	--------	---------	----------------	--------	---------	-------------	----------------	-----------------------

* other capacity and locking ranger are available; please consult factory.

PIPELATHE FEATURES

- Powerful 3.5 HP pneumatic drive generating 12500 Nm (9259 ft.lbs) torque on the cutter blade. Variable speed control 0-5 rpm.
- No need for extra gear box that reduces the rpm and multiplies the torque. It comes as standard!
- 150 mm (5,9") One piece locking shaft with build in jaws, eliminates the issue of broken or loosening retaining springs and o-rings.
- One mandrel covers complete working range.
- Innovative 6 point locking system assures maximum stability during all machining operations.
- Only one mandrel and 6 Jaw sets needed to cover machines entire range.
- Self-centering shaft with build in jaws.
- Wide Clamps produce superior clamping force for chatter free end preps.
- Fully portable for on-site and Fab-shop work.
- Available for sale or rent.

TORQUE ON CUTTER BLADE



▲ Machining pipe 24" schedule 160

6 POINT LOCKING JAWS



150 mm (5,9") shaft, assures rigidity when machining heavy wall pipe. The jaws are fully contained within the shaft with no need for retaining springs or O-rings that easily brake or get lost

PIPELATHE UNIQUE DESIGN



All the Lathe series machine design is based on long steel spindle which assure maximum rigidity because the locking shaft is fully mounted into that spindle instead partially into the main aluminium body what is causing adverse vibration due to a lot of tension on it.

PIPELATHE PERFORMANCE



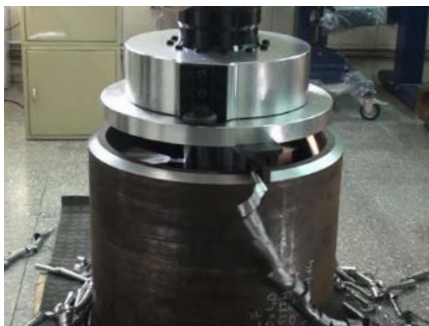
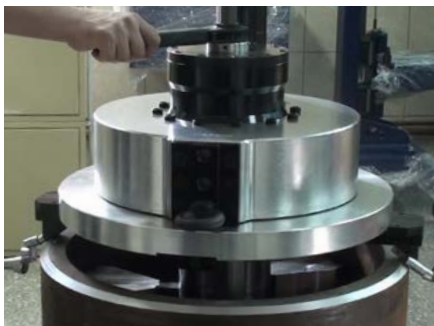
ID Clamping End Prep Tool 7" I.D. to 23,6" O.D. 180 mm I.D. to 600 mm O.D

Powerful motor unit



Powerful and efficient drive dedicated for our Lathe series beveling machines. 0-5 rpm and 12500 Nm (9200 ft.lbs) torque on the cutter blade is a standard feature.

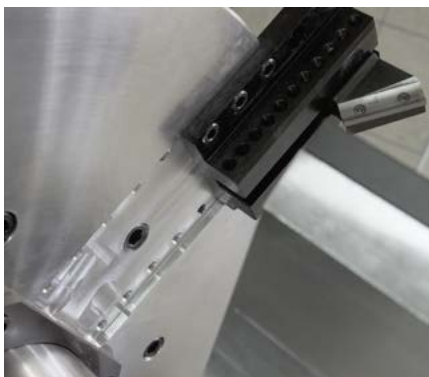


**PIPELATHE PERFORMANCE**

The performance of the machine may vary depending on the skill of the operator, the materials, the conditions of the tools and the air supply system in case of pneumatic unit.

ELECTRIC MOTOR UNIT

The PipeLathe can also be supplied as an electric version, with a 3200 Watt heavy duty motor:***

EXPANDABLE TOOL HOLDERS

Extended tool holders can increase the range of the machine due its extremely powerful pneumatic drive.

HEAVY DUTY PENDANT

Machine is equipped with a heavy duty pendant. This can be attached to both sides of the motor for operator convenience.

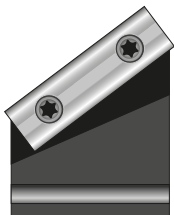
HOLDERS FOR PIPELATHE

Facing
(with 2CDI insert)



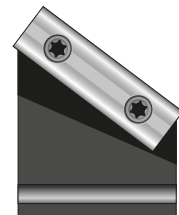
F-45-90

Inside bevelling and boring
(with 2CDI insert)

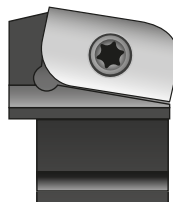


IB-45-37, IB-45-10

Outside bevelling
(with 2CDI insert)

OB-45-45, OB-45-37
OB-45-30, OB-45-10

“J” bevelling
(with 2CDJ-Rxx insert)

JP-45-45, JP-45-37
JP-45-30