



Field Machine Tools Pty Ltd

03-9585-7333
Fax 9585-7355
www.fmt.com.au
park@fmt.com.au
1/20 Shearson Crescent Mentone VIC 3194
ABN 48 097 691 748 A.C.N. 097 691 748



Quick Tech	FF6000
I.D. Mount Dia. (std)	356-863mm (14-34")
I.D. Mount Dia. (opt)	813-1524 mm (32"-60")
O.D. Mount Dia. (std)	N/A
O.D. Mount Dia. (opt)	N/A
Facing Dia. (std)	356 - 1066mm (14 - 42")
Facing Dia. (opt)	813 - 1524mm (32 - 60")
Power Options	P
Motor HP	1.08 kW (1.45 hp)
Motor Requirements	1.36 cubic m/m (48 cubic ft/m)
Pressure Requirements	620 kPa (90 PSI)
Approx. Operational Wt	189 KG (416 LBS)
Approx. Total Shipping Wt	289 kg (634 lbs)
Approx. Shipping Dim.	1220 x 660 x 685 mm (48 x 26 x 27")

To face from 356 - 1066mm (14 - 42")

The standard FF6000 comes complete with everything you need to face from 356 - 1066mm (14 - 42"). Included is the base machine with air motor, pneumatic conditioning unit, setup fingers and jaws, tool kit, tooling, and operators manual.

To face from 356 - 1524mm (14 - 60")

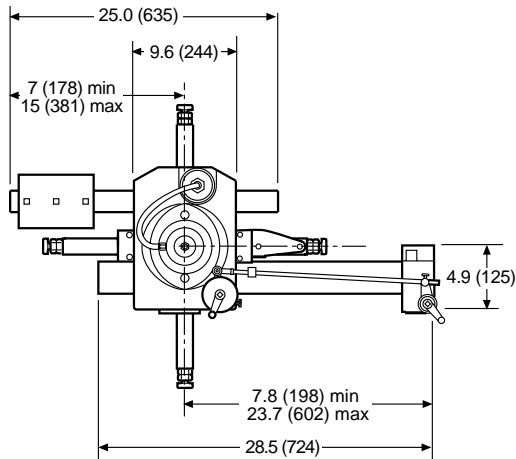
The Extended reach FF6000 comes complete with everything you need to face from 356 - 1524mm (14 - 60"). Included is the base machine with air motor, Standard chuck, extended chuck and bar assembly, pneumatic conditioning unit, setup fingers and jaws, tool kit, tooling, and operators manual.

Solid

- 8-jaw chuck provides rigid clamping in the bore.
- 76mm (3") diameter turning bar ensures a rigid tool platform, even at maximum extension.
- Tapered Timken spindle bearings & heavy duty bearings for smooth, chatter-free machining.

Versatile

- Sealed lubrication allows inverted operation.
- Tool head swivels 45 degrees in either direction to cut angles, grooves, chamfers, RTJs, and weld preps.
- Down-feed available to turn flange edges, and dress inside flange/pipe joints.

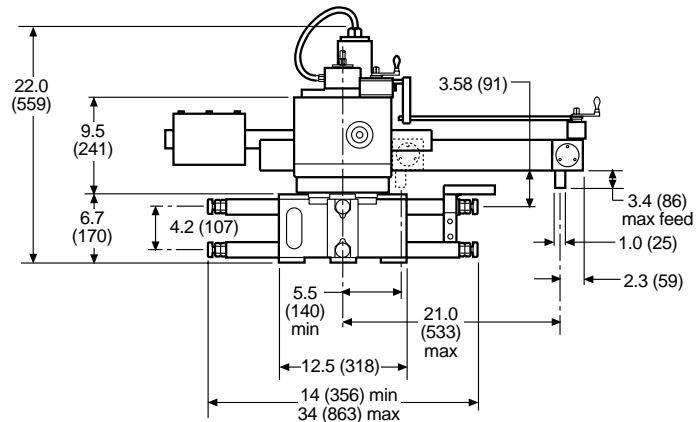


Overhead View

- Optional oversize chuck and bar assembly for flanges up to 60" in diameter.
- Grinding head available for fine finishes.
- Other modifications available for special applications.

Effective

- Gear reduction provides 798 N•m (550 ft•lbs) of torque at the cutter to remove metal fast.
- Radial feed is .076 - .813mm (.003" - .032") per revolution, infinitely variable, reversible, rack & pinion system.
- Down feed rates from .076 - .254mm (.003" - .010") per revolution are provided by the down-feed actuator system.
- Tool holder accepts 13mm or 1/2 " square tool bits.



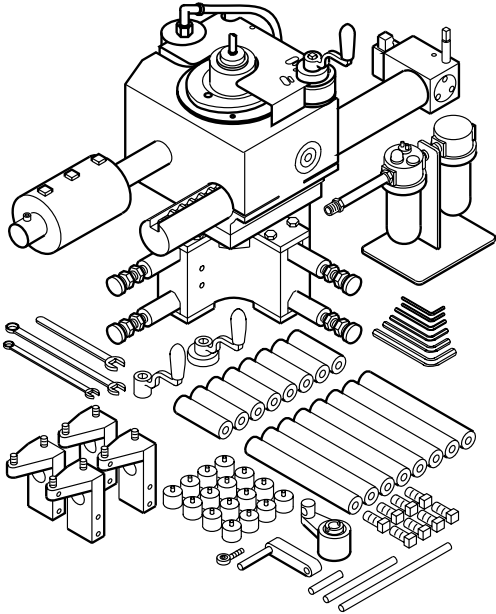
Side View

Measurements are: Inch (Metric)

Repair flanges on-site and in-line with the Model FF6000, a cost effective alternative for any company faced with repair of leaking flanges. Reduce the costs of stocking replacement flanges by repairing existing flanges in place. The job can be done quickly, so you're back in production fast. An experienced operator can normally mount the machine in the flange bore, align it and start cutting in 30 minutes.

1 Select appropriate jaw set for I.D. the machine will be chucked into. Rough set length of jaws.

2 Attach set up fingers to end of jaws (top level only). Place machine in bore and tighten jaws.



3 Remove set up fingers, indicate machine level by adjusting jaws.

4 Place tool bit in machine and you are ready to go to work!